



Make A Choice That Lasts

Waterproof Vinyl Sheet System



- Sundecks
- Roofdecks
- Hot Tubs / Pooldecks
- Balconies
- Garage Floors
- Wheel Chair Ramps
- Washrooms
- Stairs
- Benches
- Gym / Equipment Rooms



Duradek™



Company Story

Since 1974, Duradek® has been supplying North America's premier sheet vinyl pedestrian traffic membrane. Along with other PVC products, such as siding, windows and industrial roofing, Duradek® vinyl has gained wide acceptance in the construction industry as the ultimate in maintenance-free outdoor flooring.



Duradek®'s factory engineered products and professional, detailed installation techniques have set new standards for waterproofing that works.

All Duradek® membranes are reinforced for multi-directional strength and stability, and have a textured finish for slip-resistance. To increase performance, the vinyl makeup includes mildew inhibitors along with ultra-violet and heat stabilizers. Attractive patterns, colors and textures provide a contemporary new look, previously unavailable in the outdoor waterproof flooring market.

Duradek® is continually researching, developing & testing new products and application techniques.



Product Story

Duradek®, The ORIGINAL sheet vinyl membrane system for waterproofing decks and balconies, was developed to solve leak problems over 30 years ago.

How Duradek® is Better

- Duradek® is a pre-manufactured sheet, installed in one step — ready for immediate use. It can even be walked on during the installation process, meaning fewer tenant disruptions and vacancies.
- Duradek® can be successfully installed in any weather condition.
- Duradek® is glued to almost any surface, even over cracks, with minimal surface preparation.
- Duradek® requires no regular maintenance except cleaning.
- Duradek® can be purchased with varying degrees of non-slip surfaces.
- Duradek® is completely waterproof and attractive.
- Duradek® has a long life expectancy and can be re-coated in the future.
- Carpet can easily be installed over Duradek®.



Trained Installers

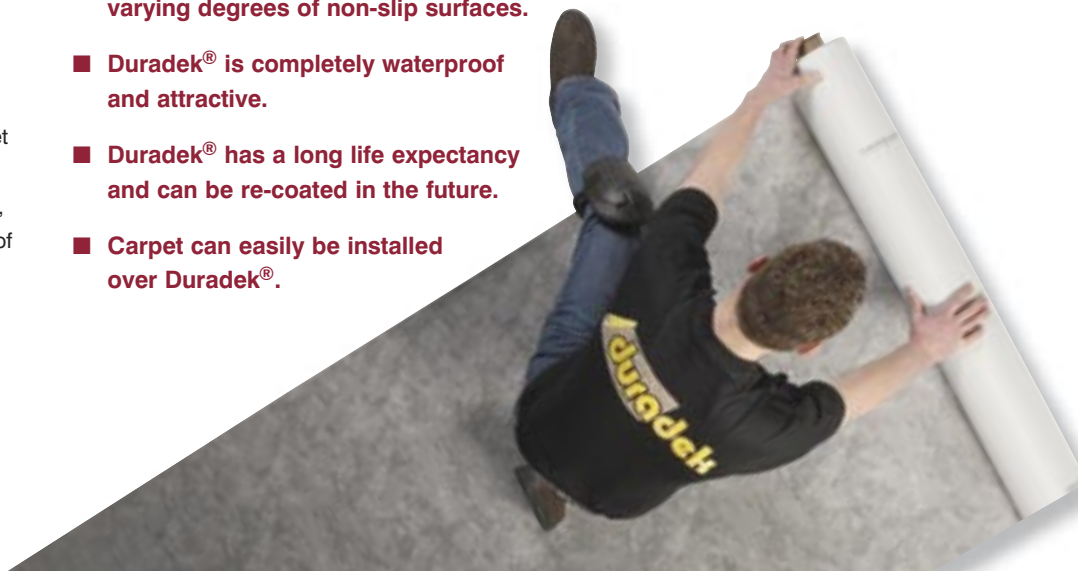
Duradek® offers ongoing classroom and video training to waterproofing contractors.

The Duradek® training is a combination of floor laying skills for appearance, and single-ply roofing skills for water tightness. Thorough knowledge of adhesives, sealants, coatings, carpentry, and concrete restoration work are common traits of a Duradek® contractor.



All necessary components of the finished waterproof system are available from Duradek®. This includes the adhesives, sealants, drains, scuppers and perimeter fastening devices.

All Duradek® products, when applied by an authorized Duradek® contractor, are covered by written warranties. Terms are dependant upon product thickness.



Duradek Permanently Waterproofs Decks and Balconies Better Than Any of the Alternatives



Commercial Waterproofing Solutions

The Duradek® System consists of a number of different types of sheet vinyl products, designed individually for many end uses.

Duradek®, a textured PVC, is laminated to a polyester reinforced fabric for additional strength. Available in an assortment of widths, thicknesses and textures, Duradek® vinyl membranes offer a wide range of waterproofing solutions in both residential and commercial construction.



Heavy duty, vinyl membranes are perfect for use on roof decks and balconies.

Constructed of 60 mils of PVC resin, Duradek® Ultra is capable of accepting heavy pedestrian traffic & extreme heat and ultra-violet conditions. It is also fire-retardant and resistant to most chemicals.



ICC-ES REPORT
#ESR-2151



CLASS A &
CLASS C



CCMC 13134-R



Residential Waterproofing Solutions

The Duradek® System is unique in its assortment of widths, thicknesses, patterns, colors and textures.

Duradek®'s rough textured materials offer excellent slip-resistance for safe footing on ramps and stairs. The smoother textures offer easy-to-care-for surfaces.

Lighter weight Duradek® vinyls offer cost-conscious solutions for deck and balcony surfaces not exposed to heavy traffic or extreme conditions. For roofdecks or surfaces requiring maximum protection, heavy-duty (Ultra) sheet flooring is ideal.

New contemporary colors, textures and patterns offer the potential for complimentary or contrasting borders, and even custom design work.



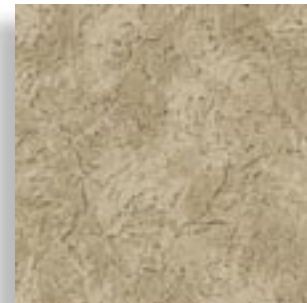
Duradek® vinyl surfaces also work very well for interior applications. Indoor pool decks, hot tub areas, and even garage floors are enhanced by Duradek®'s waterproof, easy to clean surfaces.

Product Samples



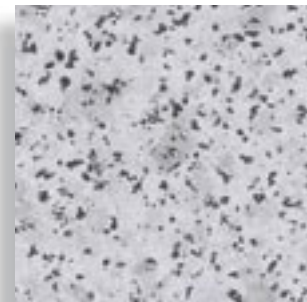
Surcoseal
Ultra Surcoseal

GREY
Also available:
Natural
Beige
Suede
Greige



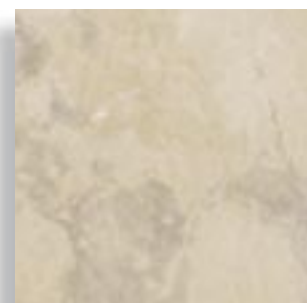
Classic
Ultra Classic

SANDSTONE
Also available:
Barley
Steel



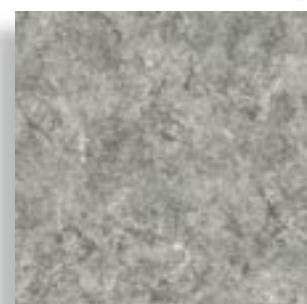
Supreme
Ultra Supreme

GRANITE
Also available:
Sonoma Chip
Taupe



Ultra Marble

MOCHA
Also available:
Pewter
Slate



Heritage
Ultra Heritage

ASPEN
Also available:
Sunrise
Agate
Sienna

Durarail™

durarail.com

Powder Coated Aluminum Railing System

Engineered to Last

Durarail™ is engineered tough!

The strength of a rail or fence system is in the posts and the framework. The stronger the structure, the wider the spans between the posts. This provides for better visual appearance and view.

The heavy wall thicknesses of the aluminum and the intricately designed extrusion combined with the fastening system gives Durarail the exceptional spans it has achieved.

Durarail™ rail and fence systems are among the widest (if not the widest) in the industry.

Customized by Design

Durarail™ Rail and Fence Systems are available in 7 standard colors.

Duradek Canada Ltd.
8288 129th Street
Surrey BC Canada V3W 0A6

Tel: 604 591 5594 • Fax: 604 591 3100
Toll Free: 1 866 591 5594
E-mail: duradek@duradek.com

Duradek U.S. Inc.
1722 Iron Street
North Kansas City Missouri USA 64116

Tel: 816 421 5830 • Fax: 816 421 2924
Toll Free: 1 800 338 3568
E-mail: duradek@kcnet.com

Duradek™

duradek.com

Any one of 180 custom colors can be produced to match any exterior design features.

Durarail™ Meets or Exceeds:

- **Boca National Building Code 1999**
Concentrated load of 200 lbs. along the top rail
- **Uniform Building Code 1997 Edition**
Minimum lateral load of 50lbs. per foot

